



2016 BOND

AUGUST 2018 | VOLUME 1 | ISSUE 1

EPISD 2016 BOND NEWSLETTER

We are building the future *We are EPISD*

Dear Community Members,



It's been a little over a year and a half since El Paso voters approved the EPISD 2016 Bond and entrusted EPISD with \$668 million to modernize our facilities, technology, security and transportation systems. A lot has happened since November 2016, and we want to inform you by sharing our progress with our 2016 Bond Program.

I'm proud to say that since January 2017 we have handed out over 20,000 new mac-book air laptops to students and faculty, purchased 62 new buses with three-point seat belts, successfully completed our first secure entry point system for elementary schools, installed 21 new age-appropriate playgrounds throughout the district and have broken ground on two of our major construction projects.

Last year, we also made community engagement in our major construction projects a priority. We created School Project Committees (SPC) for each major construction project, consisting of administrators, teachers, parents and community members. The SPCs met with architects during the programming stage of design to give their input. So far, we have held 130 bond-related meetings with EPISD faculty and the community, including SPC meetings, community meetings, groundbreakings, and more.

We held a groundbreaking ceremony at Crockett Elementary in June of 2018 to celebrate the first of our major construction projects! Teachers and students cheered as we were able to look at a year and a half of hard work materialized. We understand all the time, effort and patience that goes into making these projects a success, and we know in the end this will greatly benefit our students and the District.

I hope that you find our newsletter helpful in navigating EPISD 2016 Bond news!
Thank you for your continued support of EPISD,

Carmen Arrieta-Candelaria
Deputy Superintendent of Finance and Operations

For more information regarding the 2016 Bond
please visit our website at WWW.EPISD.ORG/EPISDBOND2016



BOND UPDATES

BURGES HIGH SCHOOL

Just over a year and a half ago, EPISD voters passed a \$668.8 million bond to elevate our district's facilities and our student's education through district-wide improvement projects. These projects include improving our athletic facilities, modernizing our many campuses, upgrading our modes of transportation and updating our technology systems, to provide a 21st Century Education experience for our students. The projects below are currently in-design, under construction or being processed by our EPISD team.

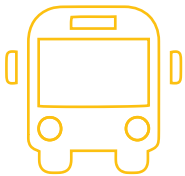


Athletics EPISD wants to provide our student athletes with the facilities they deserve. Roughly \$32M was set aside to improve our outdoor athletic facilities; including turf, track, tennis and lighting for baseball and softball fields, and tennis courts. Currently, the football fields at Andres, Austin and Bowie High School are under construction and received new turf. The newly installed turf is made with a special material that increases player safety by creating less of an impact on athlete's bodies. Another important aspect of our 2016 Bond athletic improvements is new lighting for all high school tennis, baseball and softball fields. At EPISD we understand that matches can last into the night, and we want to ensure our student athletes can complete their matches in a safe, well-lit environment.

Under construction: New Turf at Andres, Austin & Bowie

Under construction: New Track at Andres, Austin Bowie & El Paso High

Under construction: New Lighting for Bowie & Chapin BB & SB



Transportation Ensuring our students get to their school safely is a priority for EPISD. That's why the EPISD 2016 Bond included a \$8.47M budget to upgrade our school buses to natural gas operating with a three-point safety belt system. EPISD Transportation is currently working on ordering their third shipment of new buses using 2016 Bond funds; this shipment includes two regular-education buses and 17 Special Education Buses.



Technology As EPISD focuses on developing a modern, 21st Century education, a major factor involved is technology systems. The EPISD 2016 Bond set aside \$16.6M to update our current technology, infrastructure, connectivity and classroom tools. The technology scope of work includes new devices for teachers and students, network cabling infrastructure updates and secured entry points for our elementary campuses. The secure front entry for elementary campuses includes access control, surveillance and a video phone for front office staff to communicate with anyone trying to enter the campus.





MAJOR CONSTRUCTION PROJECTS



The EPISD 2016 Bond includes 17 major construction projects which include a combination of new facilities and renovations to existing facilities, to modernize our student's learning environments. The EPISD Bond Team hired ten architecture firms to take on the task

of designing these spaces and since Summer of 2017 they have been working with faculty, parents and community members to finalize their designs. Below we have rendering images of the 2016 Bond projects and a summary of the scope of work.



● Andress HS



● Austin HS



● Bradley ES/Fannin ES



● Burges HS



● Clardy ES/Henderson MS



● Coronado HS



● Crockett ES



● Dowell/Schuster/Crosby ES



● El Paso HS



● Hughey ES/Ross MS



● Irvin HS



● Jefferson HS/Silva HS



● Lincoln MS/Roberts ES/Bond ES



● MacArthur ES-Int/Bonham ES



● Morehead MS/Johnson ES



● New Northeast MS

EPISD Bond 2016 Design Schedule



● Terrace Hills MS/Collins ES

MAJOR CONSTRUCTION PROJECT UPDATES

TERRACE HILLS AND COLLINS
PK-8



● Andress HS



● Austin HS



● Bradley ES/Fannin ES



● Burges HS

Andress High School

The Andress High School 2016 Bond project scope of work includes a new performing arts center, a new field house, enhanced courtyard, building renovations and improvements to the current HVAC system. The new performing arts facade is featured above, the building will include a competition-grade theater/stage along with band, orchestra, dance and choir classrooms. We anticipate construction will begin on the Andress campus in the 2018 Fall Semester.

Austin High School

The Austin High School 2016 Bond Project scope of work includes a new performing arts center along with interior building systems upgrades aimed at maintaining the campus' historic character, while creating a more cohesive feel to the new construction. The new 20,000-square-foot Performing Arts Center will include an Auditorium/Theater, Orchestra Room and Band Room with ancillary spaces. Phase I has begun with the installation of portables on campus, construction is anticipated to begin in the 2018 Fall Semester.

Bradley/Fannin Elementary

Bradley and Fannin elementary schools will be consolidated into one elementary campus at the current Bradley site as part of the 2016 EPISD Bond. The project scope includes renovations to the existing Bradley building and a new adjacent building addition. The new addition will house PK through First grade classrooms, administrative space, a library, and a multi-purpose room. Construction is anticipated to begin in the 2019 Spring Semester.

● El Paso HS



● Hughey ES/Ross MS



● Irvin HS



● Jefferson HS/Silva HS



Burges High School

Burges High School's transformation will be a combination of over 129,000 square-feet of new construction plus renovations to select existing buildings. The new construction includes 21st Century classrooms, administration offices, fine arts amenities for band, choir, orchestra, art and drama; including a new blackbox theater, and an enhanced outdoor courtyard. Construction is anticipated to begin in the 2019 Spring Semester.

Coronado High School

The Coronado High School 2016 Bond Project scope of work includes the demolition of buildings A & B, a new two-wing building addition with over 150,000 square-feet of classrooms and administration space, a new field house, enhanced courtyard, additional parking spaces, and competition gym renovations. Phase I of construction has started on the campus with the installation of portables, construction of lower level parking and renovation of two lab rooms. Phase II of construction is anticipated to begin in the 2019 Spring Semester.

Crockett Elementary

Crockett Elementary School's historical building is undergoing various upgrades and improvements including: new ceilings, updated interior finishes, servicing of light fixtures, HVAC upgrade to refrigerated air, accessibility improvements, a new drop-off/parking lot, and a new technology classroom. Other classroom buildings will receive improvements as discussed with campus staff. Construction at Crockett began in June of 2018 and will continue through until summer of 2019.

Dowell/Schuster/Crosby

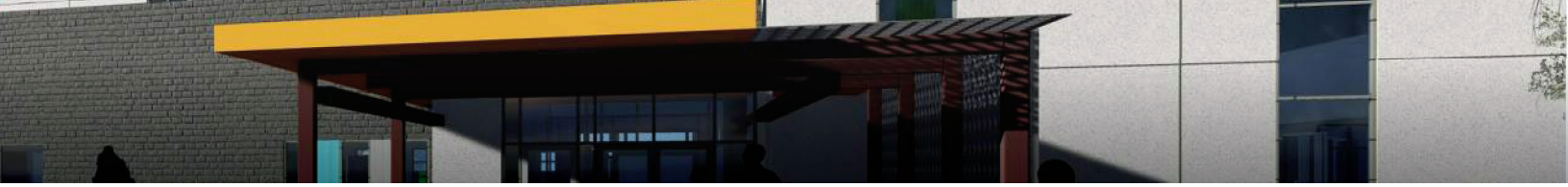
Dowell, Schuster and Crosby elementary schools will be consolidated into a single elementary school at the existing Dowell site. The project scope of work includes the demolition of Dowell to make way for a new campus of approximately 90,000 square-feet. The new 2-story elementary school will be designed as a 21st Century Learning Environment to serve a capacity of 900 students. Construction is anticipated to begin in the 2019 Spring Semester.

El Paso High School

As part of the 2016 Bond scope of work, El Paso High School will receive a new fine arts addition, renovations to former fine arts spaces, and façade improvements to the historic building. Main-building restroom renovations, elevator upgrades, parking lot/road improvements, and new tennis courts are also included in the scope of work. Construction is anticipated to begin in the 2018 Fall Semester.

Henderson/Clardy

Clardy Elementary School and Henderson Middle School will be consolidated into a PreK to eighth-grade campus at the current Henderson site. The project scope of work includes a new middle school classroom and library building addition, renovations to the existing Henderson classrooms, site and landscaping improvements, and new drop-off zones. Construction is anticipated to begin in the 2019 Spring Semester.



● Clardy ES/Henderson MS



● Coronado HS



● Crockett ES



● Dowell/Schuster/Crosby ES

Irvin High School

As part of the 2016 Bond scope of work, Irvin High School will receive a new classroom and administration building addition, a new 300-seat theater addition, and renovations to existing classrooms to accommodate the school's new academy model. Portables are being installed on campus and construction is anticipated to begin in the 2019 Spring Semester.

Jefferson/Silva High School

Jefferson/Silva High School will receive campus improvements as part of the 2016 Bond to create a more cohesive campus feel. The current Jefferson administration building will be demolished and a new building addition housing labs, classrooms, administration and a cafeteria will be built. Jefferson will also receive a new weight room, upgraded baseball and softball fields and renovations to the main gym and auxiliary locker rooms. Construction is anticipated to begin in the 2019 Fall Semester.

Lincoln/Bond/Roberts PK8

Lincoln Middle School will be consolidated with Roberts and Bond Elementary Schools into a Pre-K to eighth-grade campus at the existing Lincoln site. The Bond project scope of work includes the demolition of the existing gym and portion of the existing classrooms to make way for new building additions to include; middle school classrooms, administration, a gymnasium, fine arts spaces and a library. New playgrounds and renovations of existing classrooms will also be included. Construction is anticipated to begin in the 2018 Fall Semester.

MacArthur/Bonham PK8

MacArthur and Bonham will be consolidated into one campus, project scope includes a new fine arts addition, renovations to former arts spaces to create a multipurpose room and classrooms, and upgrades to outdoor spaces. Construction is anticipated to begin in the 2019 Spring Semester.

Morehead/Johnson PK8

Morehead Middle and Johnson Elementary will be consolidated into a single Pre-K to eighth-grade campus at the Johnson site. Project scope includes renovations to the existing Johnson campus and new building additions; including a middle school gym, library, cafeteria, administration area and classrooms. Construction is anticipated to begin in the 2019 Spring Semester.

New Northeast Middle School

The New Northeast Middle School will be an all-new construction project to create a middle school in the Northeast for a capacity of 1,000 students. The middle school will be located off of Fred Wilson, near the old William Beaumont hospital. Construction is anticipated to begin in the Summer of 2019.

Ross/Hughey PK8

Ross Middle School and Hughey Elementary School will be consolidated into a Pre-K to eighth-grade campus at the current Hughey Elementary site. New building additions will include a library, administration, middle school classrooms, and middle school gym. Renovations to the existing Hughey Elementary campus, to include mechanical and electrical upgrades, are also planned. Construction is anticipated to begin in the 2019 Spring Semester.

Terrace Hills/Collins PK8

Terrace Hills Middle School and Collins Elementary School will be consolidated into a Pre-K to eighth-grade campus at the Terrace Hills site. The campus will receive new elementary classrooms, a middle school fine arts building addition, a new parking/drop-off area, along with renovations to the gym and existing classrooms at Terrace Hills. Portables are currently being installed on the Collins campus, construction is anticipated to begin in the 2019 Spring Semester.

● Terrace Hills MS/Collins ES



EPISD Bond 2016 Design Schedule



● Lincoln MS/Roberts ES/Bond ES



● MacArthur ES-Int/Bonham ES



● Morehead MS/Johnson ES



● New Northeast MS





COMPLETED PROJECTS

Since the bond passed in November of 2016, the EPISD bond team has been working year-round to ensure we deliver on our promise to the voters and our students. We are excited to display those projects that are 100% complete. These projects include construction of athletic facilities, upgraded transportation, installation of modern play equipment and advancing our technology and safety networks.



Athletics

- Completed: Turf Replacement at Burges, El Paso High & Franklin
- Completed: Track Resurfacing at Burges
- Completed: Tennis Resurfacing at Bowie
- Completed: Tennis Replacement at Chapin & Franklin
- Completed: Lighting at Chapin Tennis, Franklin Tennis & Bowie Baseball



Transportation

- Completed: 29 New Special Needs Buses purchased
- Completed: 33, 77-passenger regular education buses purchased

Playgrounds

- Completed: 21 New Playgrounds with Shade Structures
- Schools that received playgrounds:

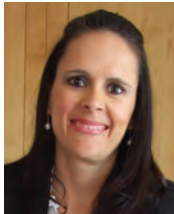
Barron	Lamar	Putnam
Bliss	Lee	Western Hills
Clendenin	Milam	Whitaker
Coldwell	Moreno	White
Cooley	Moye	Zavala
Green	Park	
Hillside	Polk	



Technology

- Over 20,000 Mac Book Air laptops purchased and distributed to sixth, seventh & eighth grade students
- Franklin High School Cabling Refresh completed
- Main Entrance Secure Entry System Installed at Aoy, Barron, Bradley, Green, Lundy, MacArthur, Mesita, Tom Lea and Western Hills
- Telecommunications Manager complete

MEET THE BOND ARCHITECTS



Renée Jimenez AIA, LEED AP
BD+C, CNU-A, President | CEO FIRM
MNK Architects, Inc.
Texas A&M | BA in Environmental Design
Bond Projects: Burges High School
Campus Transformation & El Paso High
School Fine Arts Addition + Renovations

How long have you been an architect?

I've been licensed since 2009

What is the toughest thing to deal with in your line of work?

Time.

What skill do you think is most important for anyone wanting to pursue this career?

Multi-tasking – the ability to handle multiple projects, priorities and clients at the same time.

What high school or college courses did you find to be the most applicable or important for your job?

The design studios had the most lasting impression.

When did you know this is what you wanted to do?

Oh, I think I always knew – since I was little.

What are you most excited about with the Bond projects you are working on?

Creating new types of learning spaces.

What was your first job?

It was in first grade – I had my own candy distribution business.

Do you have a hidden talent?

I love motorcycle and ATV riding.

What skill would you like to learn?

Photography.

If you could have lunch with person, past or present, who would it be?

My mother.

What has been your favorite travel destination? Barcelona - it was the first time I got to travel alone.

What is your favorite book, film, or song? "Hotel California".

What is your favorite thing about El Paso?

My favorite thing is the people.....

MEET THE PROJECT MANAGERS

The EPISD 2016 Bond Team would like to take the time to highlight a different team member in each of our newsletters. The EPISD 2016 Bond Team consists of both EPISD staff and Jacobs/Huitt-Zollars staff, who are working hard to ensure projects are completed in a fiscally responsible and timely manner.



Sheila Henderson
Jacobs Construction Manager

Sheila is part of the Jacobs team responsible for Construction Oversight on the Bond Projects. She oversees the project management and engineering teams, along with the scheduling, so that projects get completed on time and on budget. Henderson graduated from Colorado State University at Pueblo with a Bachelor's of Science in Civil Engineering Technology and was the first woman to earn that degree from the university. Prior to this position, Henderson owned her own contracting company and worked with the National Parks Service and on projects for GSA, DOE-NPS, FAA, State of Colorado, the City and County of Pueblo, various Non-Profits, and residential and commercial entities. The construction phase of the projects is her favorite and she thinks having the talent to manage people effectively is the most challenging part of the job. "In construction, there are road maps, plans, and specifications that give us direction. It is the complexity of people that can be challenging." Sheila enjoys spending her free time at home with her dogs and cats, keeping up with yard and housework, and listening to music- techno, disco and 80's.

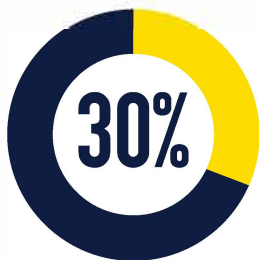
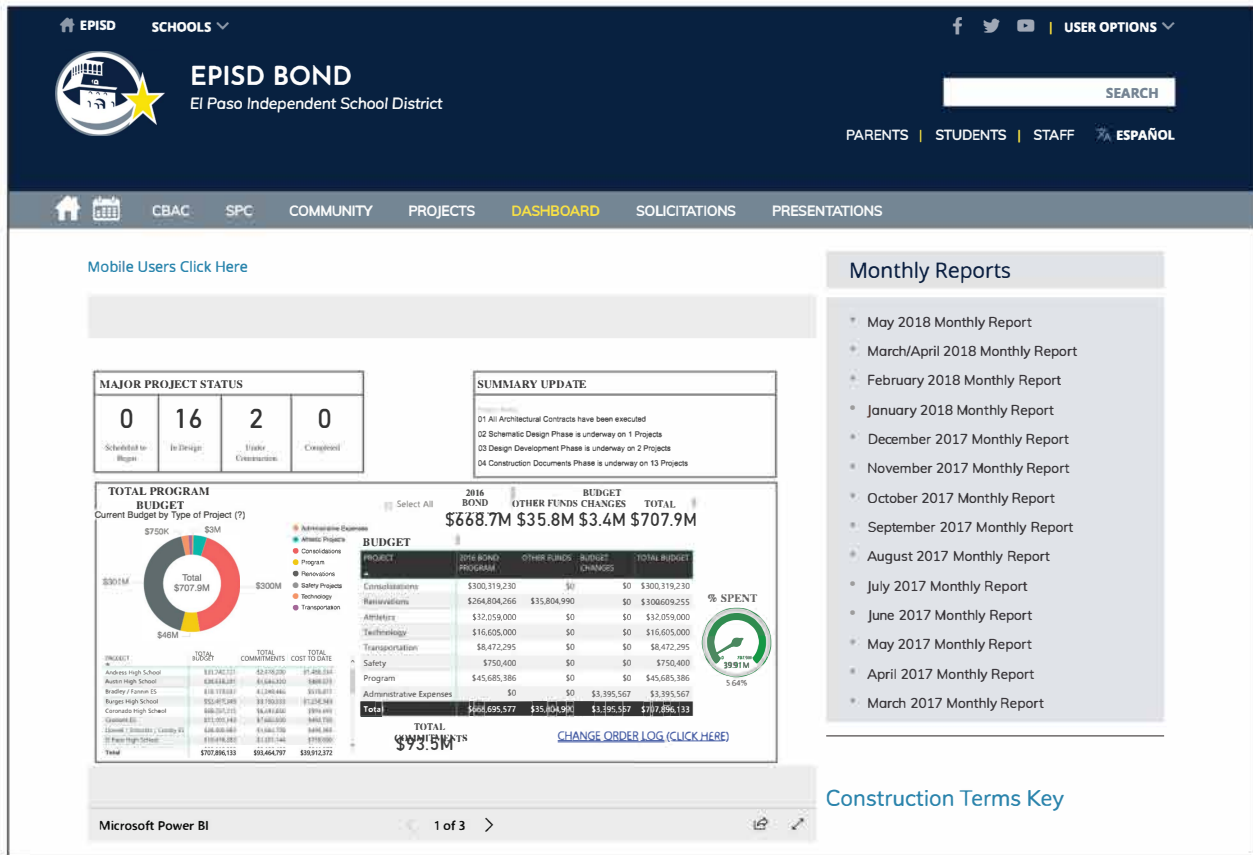


Johnny Hibbs
Jacobs Program Manager

Johnny Hibbs brings 25 years of construction management experience, in the K-12 environment. As the Program Manager, Hibbs assists in day-to-day operations lending his expertise to the design, construction and operation components of the projects. Originally from San Angelo, Texas, Hibbs spends a lot of time collaborating with professional educators to bring about the successful completion of educational facility projects. He is looking forward to, "seeing the transformation of facility upgrades for our community of learners." Primarily having worked for school districts in the North Dallas Metroplex, Hibbs has participated in the opening of more than 50 new or heavily renovated campuses funded through various capital bond campaigns. One of his favorite past projects includes the renovation of the historical building at the University of North Texas, originally constructed in the 1890's. Hibbs describes himself as, "a fixer-always working on something" whether it is bringing schools into the future with 21st century learning environments or writing poetry and stories. One day he hopes to volunteer full time to worldwide relief efforts through a faith based organization or NGO. In the meantime, Hibbs thinks the people and weather are the jewels of El Paso and anywhere can become a favorite local spot.

BOND DASHBOARD

If you are interested in the financial aspect of the 2016 Bond, EPISD has created a multifaceted dashboard that allows users to navigate through our spending. The 2016 Bond Dashboard provides you with dollars spent and committed, approved change orders and project timelines. To check out this feature click on the dashboard link: www.episd.org/dashboard



Currently in month 18 of 60 or 30 percent complete.



EPISDBOND@EPISD.ORG
WWW.EPISD.ORG/EPISDBOND2016

For more information on our 2016 Bond major construction projects, please visit our website. For questions or any other information, email our Bond Outreach Coordinator at mndalbin@episd.org.